

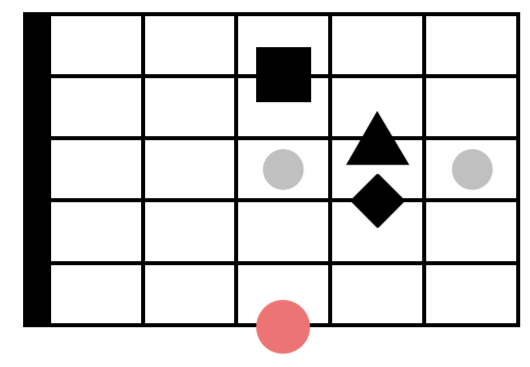
Drop 3 Chord Inversions | G major

Mike Salow

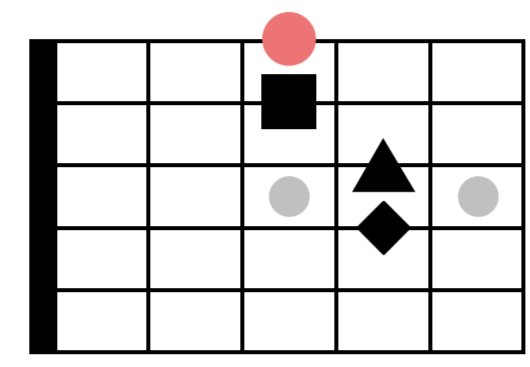
Standard tuning

♩ = 120

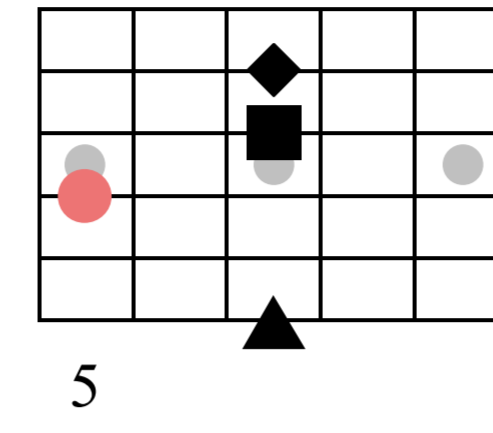
Gmaj7 (root inv.)



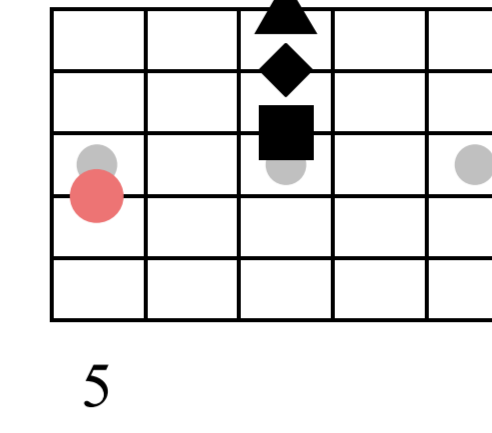
Gmaj7 (3rd inv.)



Gmaj7 (1st inv.)



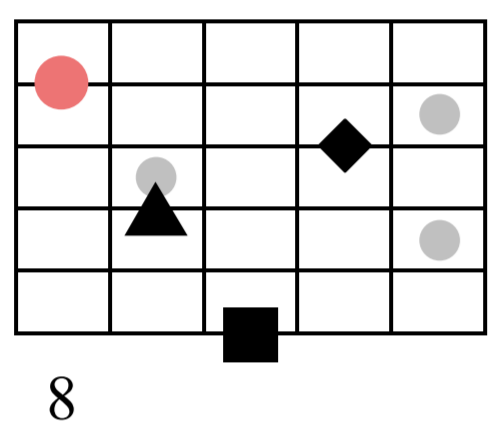
Gmaj7 (root inv.)



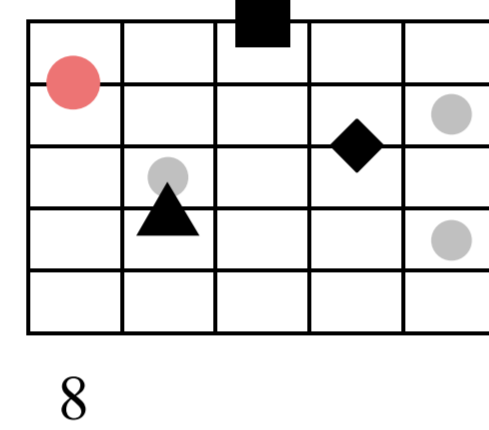
Circle = Root | Triangle = 3rd | Square = 5th | Diamond = 7th | NOTE: these are not official symbols for these intervals. I'm only using them for this lesson.

s. guit.

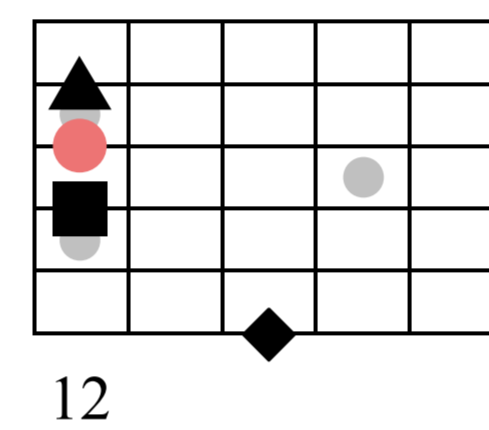
Gmaj7 (2nd inv.)



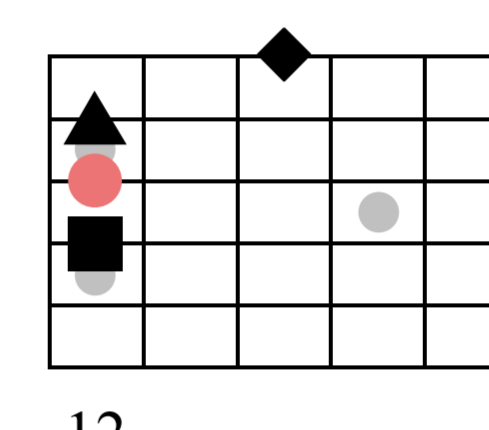
Gmaj7 (1st inv.)



Gmaj7 (3rd inv.)



Gmaj7 (2nd inv.)



Notice how the lowest note on the 6th string is moved to the 1st string to create another chord shape/inversion.